



Hamlet Court Road | | Westcliff-on-Sea | SS0 7DE

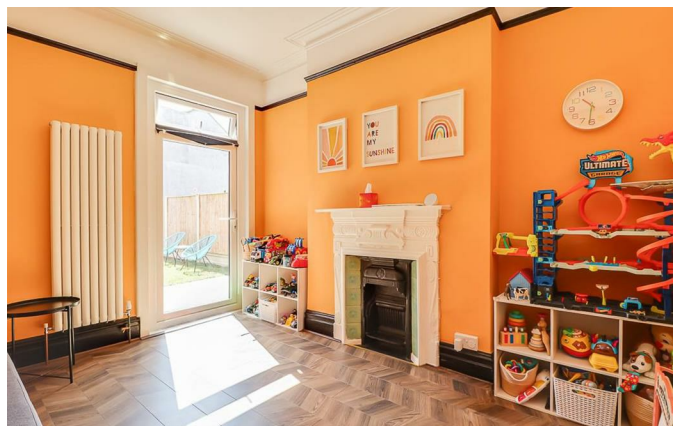
Guide Price £425,000

bear
Estate Agents

**Hamlet Court Road |
Westcliff-on-Sea | SS0 7DE
Guide Price £425,000**

* £425,000 - £450,000 * Substantial four-bedroom semi-detached family home offering spacious and versatile accommodation, a generous rear garden, and a prime Westcliff-on-Sea location close to amenities, schools, and transport links.

- Four Bedroom Semi-Detached House
- Dining Room with a Feature Fireplace
- Integrated Appliances
- Modern Three Piece Bathroom
- Off-Street Parking for Two Vehicles
- Bay Fronted Lounge
- Extensive Kitchen/Breakfast Room
- WC/Utility Room
- Generous Rear Garden
- Double Glazing and Gas Central Heating

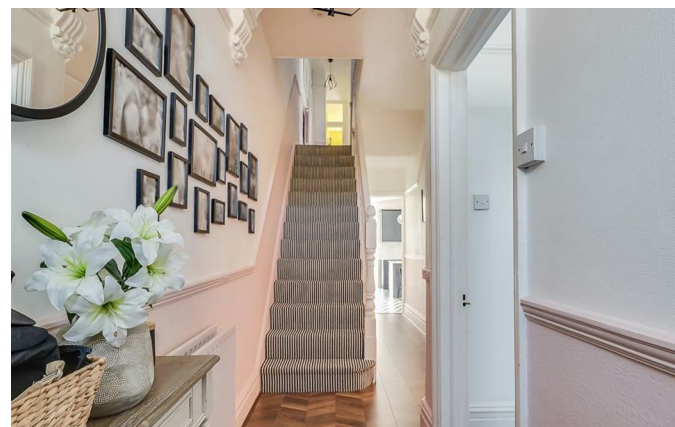




This impressive semi-detached house provides expansive living accommodation throughout, making it an ideal family home. The property opens with a welcoming entrance hall leading into a bay-fronted lounge filled with natural light. To the rear, the dining room benefits from a charming feature fireplace and direct access to the garden, creating an ideal entertaining space. The extensive open plan kitchen/breakfast room offers ample worktop space, integrated appliances, under stair storage, and access to both the rear and side of the property. A practical WC/utility room completes the ground floor accommodation. To the first floor, the landing leads to a large bay-fronted master bedroom with built-in wardrobes, two further double bedrooms, a single bedroom, and a modern three-piece bathroom. Externally, the property boasts a generous laid-to-lawn rear garden with patio seating areas and access to external storage. To the front, there is comfortable off-street parking for two vehicles. Further benefits include double glazing and gas central heating.

Situated on Hamlet Court Road in Westcliff-on-Sea, the property falls within the catchment area for The Westborough School and Chase High School, whilst also being close to highly regarded grammar schools. The home is conveniently positioned close to a wide range of amenities, London Road, parks, the seafront, and Southend City Centre. Bus links and Westcliff Train Station are also within easy reach, making this an ideal location for commuters and families alike.

Four Bedroom Semi-Detached House



Entrance Hall

22'5 x 5'7>3'7 (6.83m x 1.70m>1.09m)

Lounge

14'6 x 12'9 (4.42m x 3.89m)

Dining Room

12'3 x 10'8 (3.73m x 3.25m)

Kitchen/Breakfast Room

25'7>17'5 x 12'8>6'1 (7.80m>5.31m x 3.86m>1.85m)

WC/Utility Room

8'3 x 4'5 (2.51m x 1.35m)

Landing

Bedroom One

17'11 x 14'5 (5.46m x 4.39m)

Bedroom Two

12'4 x 10'11 (3.76m x 3.33m)

Bedroom Three

11'4 x 9'4 (3.45m x 2.84m)

Bedroom Four

9'3 x 7'8 (2.82m x 2.34m)

Three Piece Bathroom

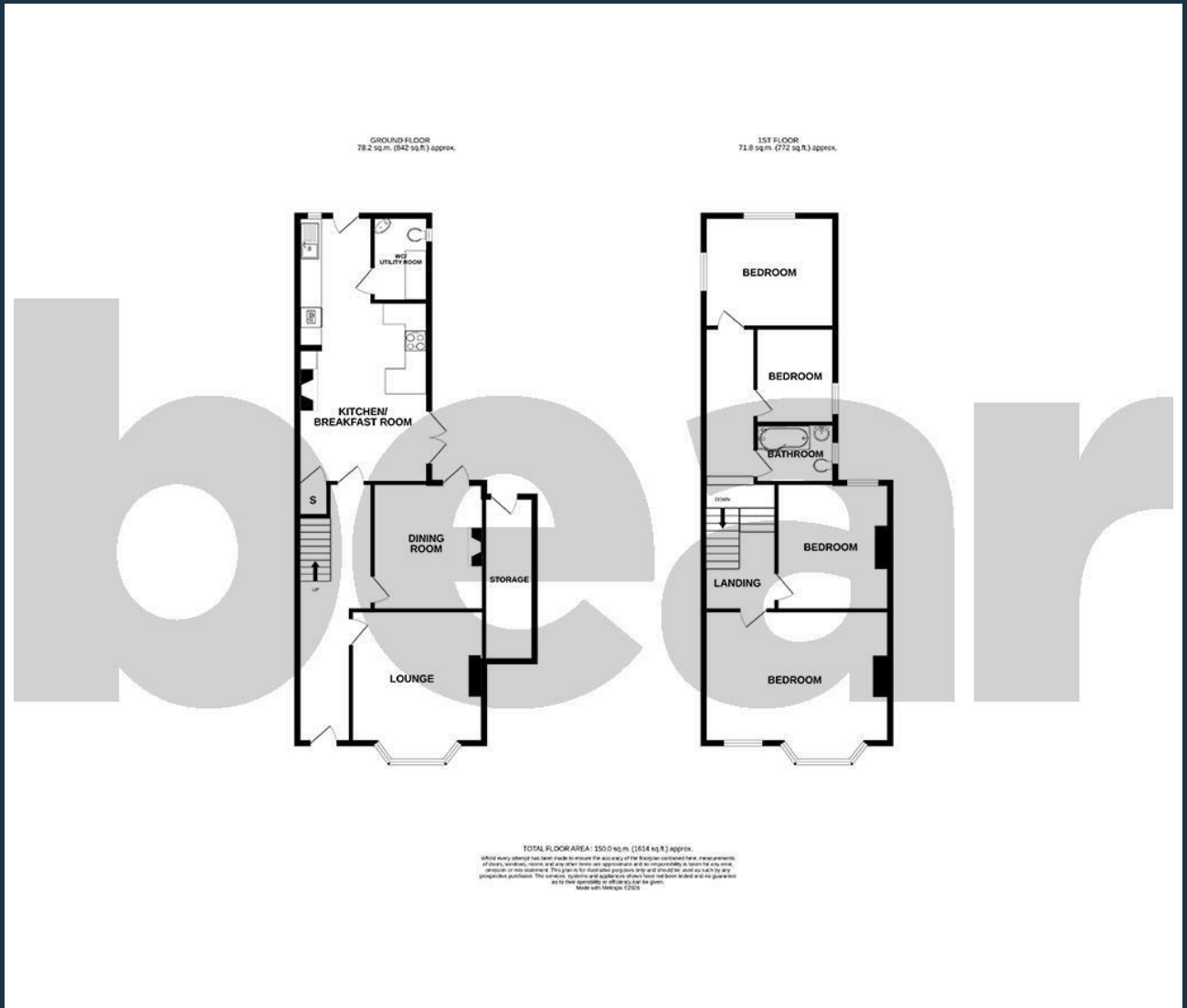
7'3 x 5'8 (2.21m x 1.73m)

Garden

External Storage

Off-Street Parking





Energy Efficiency Rating		Current	Potential
Very energy efficient - lower running costs			
(92 plus) A			
(81-91) B			
(69-80) C			
(55-68) D			
(39-54) E			
(21-38) F			
(1-20) G			
Not energy efficient - higher running costs			
England & Wales		EU Directive 2002/91/EC	

204 Woodgrange Drive
 Southend-on-Sea
 Essex
 SS1 2SJ
 01702 811211
 info@bearestateagents.co.uk
<https://www.bearestateagents.co.uk>